

# **ANIMAL WELFARE SOCIETY OF SOUTH AFRICA**



**ANIMAL WELFARE  
SOCIETY  
OF SOUTH AFRICA**

## **ANNUAL REPORT 2016/17**

BBBEE Level 4

## The Animal Welfare Society (AWS) of South Africa

We offer a full range of veterinary services to the underprivileged communities of Cape Town. From our base in Philippi, we care for about 4000 animals a month.

The clinic is open seven days a week, including Saturday and Sunday. We have fully equipped theatres where we do sterilisations, orthopaedic and other operations. At any one time we can house more than 100 sick or injured animals.

We are committed to sterilising every animal that comes through our hospital in order to contribute to reducing the number of strays. Our inspectors respond to calls for any animal in distress, including injured strays, dog fighting and animal abuse.

## ABOUT US



**BUDDY** (pictured above) is a beautiful white puppy with whom his mom Gracie surprised everybody. The pup is growing up with two mothers: his canine one as well as cat Cleo, who is protective of him. All three were adopted together by a Rondebosch family, who adores them.

**GRACIE** (below) and her friend **Cleo**, the cat, were so besotted with one another that they would whine and cry when separated. Eventually the Society let them share one kennel, making the two friends very happy.



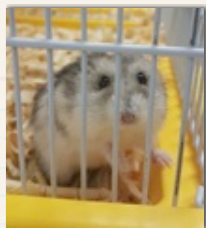
AWS also has adoption kennels. We take in strays and unwanted pets to find them suitable homes. Each animal is microchipped and sterilised and we are strict about home checks. We have a growing number of happy adopters and pets in the greater Cape Town community.

The Society does not receive state funding and depends entirely on donations.

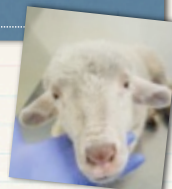
### COVER PHOTO

Justin (8 years) with his sterilised dog Woolie is our ambassador in the informal settlement near Philippi. He brings in stray and sick animals for treatment - a living example of our youth education campaign.

## UNUSUAL PATIENTS



A dwarf **HAMSTER** (left) was one of the Society's tiniest patients, closely followed in size by a **GUINEA PIG** (bottom left). Our dedicated medical staff treated the hamster's chest infection with a five-day course of antibiotics. Kayla, the **GOAT**, (two photos, below) required surgery to pin her badly broken hind leg, which was injured when she fell off a table...yes, she is an indoor pet, who walks on couches and furniture and is cuddled by her doting owner. But she seems more careful about climbing on tables these days. Other animal patients over the past year have included **SHEEP** (top right) and horses, but the majority remain cats and dogs of all sizes.



# Patron's Welcome

"NEVER, NEVER BE AFRAID TO DO WHAT'S RIGHT, ESPECIALLY IF THE WELL-BEING OF A PERSON OR ANIMAL IS AT STAKE.' I WOULD LIKE TO USE THESE WORDS BY MARTIN LUTHER KING TO WELCOME YOU TO THE 2016/17 ANNUAL REPORT OF THE ANIMAL WELFARE SOCIETY OF SOUTH AFRICA.

As AWS Patron I cannot emphasise enough how important it is for a nation to treat not only its human citizens but also its animals well; to prevent any kind of cruelty and abuse, and instead show compassion and kindness to the most vulnerable members of our society.

My political career is based on doing what's right. Whether it is fighting for democracy, for human rights or for a better South Africa, I've always strived not to be afraid and instead do what I believe is right, even when there are easier or more popular routes available.

I believe that AWS subscribes to a similar philosophy in that it is not afraid to speak up when it comes to the well-being of those it serves: the animals and their owners, who tend to live in economically challenging circumstances. I would like to commend the Animal Welfare Society for its excellent community work and wish those involved in restoring and caring for our animals another successful year.



**Alderman Patricia de Lille**

Mayor - City of Cape Town

AWS Patron

## Notice of AGM 2017

WHEN: Monday, 11 September 2017 - 6pm

WHERE: Boardroom of RSM, 15 Greenwich Grove,  
Station Road, Rondebosch, Cape Town

### AGENDA

1. Welcome
2. Apologies
3. Confirmation of AGM Minutes (held 5 September 2016)
4. Matters Arising
5. Chairman's Report
6. Management and Hospital Report
7. Financial Report
8. Election of Auditors
9. Election of Council Members

Thereafter a Council meeting will be held in order to elect members of the Executive Committee. All AWS members are cordially invited to attend the AGM proceedings.

Dr J McNamara, AWS President



## Chairman's Report



**John le Roux**

AWS Chairman

IT IS PLEASING THAT DESPITE YET ANOTHER ECONOMICALLY CHALLENGING YEAR, THE ANIMAL WELFARE SOCIETY HAS MANAGED TO KEEP UP ITS EXCELLENT AND DESPERATELY NEEDED SERVICE TO THE ANIMALS OF THE CAPE FLATS. THE SOCIETY'S FINANCES HAVE WEATHERED THE DOWNTURN RELATIVELY WELL.

For this, we need to thank the following: Our generous individuals and trusts who either donate or bequeath to us much needed finance so that we can "balance our books";

The Executive Committee, comprising Jim McNamara, John McMullen, Sandy Severn, Marianne Pontier, Marian Jacobs and Ann Sanders, for their time, commitment and concern;

Our Vice Chairman, John McMullen, for his endless passion and energy in ensuring that we operate efficiently; Our President, Jim McNamara, for always being readily available to "roll up his sleeves"; And all our staff for the hard work and care, working under difficult circumstances.

The beneficiaries of the efforts of the above-mentioned are pets and animals who are not able to verbalise their thanks to you. So on their behalf, I would like to say to you all: A BIG THANK YOU!



**SECOND CHANCE** for three horrifically emaciated and sick dogs from Delft. Our team was alerted to the sad state of these dogs, lying curled up in a sandy backyard of a dwelling. They were brought back to the AWS clinic, medically assessed and treated for mange and malnutrition. Within two months, they had fully recovered, sporting shiny coats and a new zest for life. One dog has been adopted; the other two are waiting for a good home.

# President's Report

DURING MY INTERACTIONS WITH THE WONDERFULLY DEDICATED STAFF AT THE ANIMAL WELFARE SOCIETY, I SOMETIMES WORRY THAT SUCH STRESSFUL WORK MIGHT RESULT IN "COMPASSION FATIGUE" AMONGST THOSE WHO CARRY THE BURDEN OF CARING FOR ANIMALS IN DISTRESS..

But thankfully I have never seen incidence of that, and the staff just keep delivering their compassionate care as they work to heal injured animals and find "forever homes" for adoptees (like my own two). They are a truly remarkable group of people, led by the ageless Dr John McMullen, and they have my gratitude and admiration.

During its 88-year history, the services rendered by the AWS are subsidised by our generous donors, who have been the foundation of your Society's stability since its founding in 1929. It has been especially pleasing to see the flow of bequests coming in from people who, decades ago, pledged their future support to the Society. We would be immensely grateful if you would please consider doing this as well.

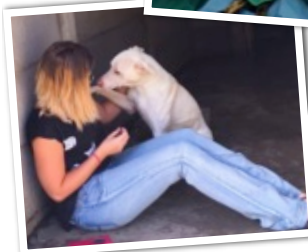
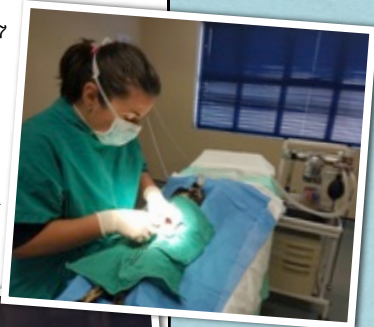
Despite such donor generosity, though, the families that we serve have not been immune to the difficulties in our current economy, and many have struggled to make even small contributions towards the costs of their pets' medicines and care. Our revenues have fallen; we operate at a monthly deficit, and thus the donations that we receive are more important than ever. Simply put, we need to strive ever harder to secure donations to enable us to continue to serve the many animals that we see each month. We remain tremendously grateful for any such donations. We again look forward to working with Brigitte Reeve-Taylor and her fantastic dance troupe for this year's Dancers Love Dogs fundraiser for **mass sterilisation** efforts (see photo of vet performing a sterilisation). The 2017 show is on 1 November, again at Artscape Theatre.

There has been a fairly dramatic **increase in the number of volunteers** and visitors to the Society (see photo below). We do hope that you will get a chance to visit us in Philippi and meet some of these extraordinary staff members. Along with Dr Mac and his staff, the Society's decades of success is due in no small measure to the quality of volunteer leadership that it has enjoyed through the years. Please let us know if you might wish to get involved with supporting the work of the Society. You can visit our website and Facebook page for news about the animals who have been rescued and helped to find homes, and about the caring and compassionate AWS staff who keep things running so efficiently.



**Dr Jim McNamara**

AWS President



# Management & Hospital Report



**Dr John McMullen**

AWS Vice Chairman

**"THE GREATNESS OF A NATION AND ITS MORAL PROGRESS CAN BE JUDGED BY THE WAY ITS ANIMALS ARE TREATED." (WIDELY ATTRIBUTED TO BUT NOT ACTUALLY SAID BY MAHATMA GANDHI)**

The past year at the Animal Welfare Society in Philippi has seen a number of new initiatives and challenges in addition to the day-to-day running of the Society. It has become evident that due to the fact that we are open seven days a week, we have found that our weekends are the busiest because some of our sister societies are closed or provide only a limited service. We can see up to 300 clients on these two days. This puts a tremendous strain on our resources and the staff. We will be considering the possibility of a limited service during the week to offset the overtime of staff during the weekends.

It has never been our policy to

close at any time but our finances are constantly under constraint.

## Our Education

### Programme

has blossomed with Team AWSome during the year and we are seeing more and more schools sending their learners to conduct their life orientation service at our facility. The children are given various tasks, such as cleaning, feeding and walking with the dogs or interacting with the cats in their kennels.

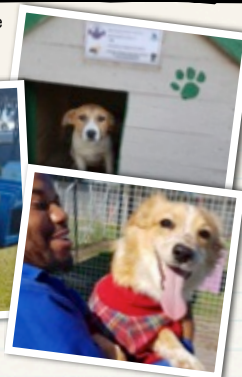
Thereafter we have many pupils volunteering to help when they are free at weekends. Our youth education programme has taken us to creches, high schools and even Sunday school classes, where we hand out a booklet about animal care, feeding, vaccination, sterilisation and cruelty. At the end of the booklet there's a question-and-answer section reviewing the contents. We are also supporting the Plain Chat group, which interacts with the principals of 44 schools in Mitchells Plain whose aim is to engage with their pupils on life skills beyond their academic curriculum.

For the first time we have had not one but two compulsory community service veterinarians. They were delighted with the amount of medical and surgical exposure that they received during their year with us. One has even stayed in the welfare environment to continue serving the indigent pets of the Cape Metropole.

The Charity Shop continues to do well and is becoming better known to the rural community which surrounds our facility. It has once again proven the adage that one person's trash is another person's treasure.



Due to the worsening socio-economic circumstances that we find ourselves in, we are seeing more and more affluent clients using our services because of budget constraints. This is evidenced in our stats that show an across the board increase of approximately 10% (apart from adoptions, which unfortunately have decreased). Our policy of sterilisation procedures has been implemented in a stricter fashion despite opposition from some members of the public. We sterilise every animal that comes through the doors of our clinic, in a quest to reduce the number of unwanted and stray animals. Our sister organisations are beginning to take the same stance and we are hoping that the Cape Animal Forum will adopt this policy universally.



We have been fortunate to have a group of talented advertising (and animal-loving) people come on board to advise us on fundraising projects. Our biggest initiative to date has been the Mandela Weekend, which saw a huge number of people interact with the animals as well as consuming food and drinks to keep their energy levels up. Virgin Active have initiated the "Dog Jog" programme with their clients and are continuing their tremendous support in practical aspects of our maintenance. The upcoming "Snuggle Fest" in October will see sponsored people spending the night (19:00 to 7:00) with our animals in their runs. There will also be live music and a braai. We hope to make everybody as comfortable as possible under the stars.

Brigitte Reeve-Taylor (Dancers Love Dogs) has been an invaluable supporter during the year, funding sterilisations, deworming and the **Kennel Project** (see photos), which donated hand-painted kennels for the sterilised pets of Ocean View. Our thanks go out to all the companies that support us with pet food such as Pick 'n Pay next door, who also kindly provided the newly tarred road to our premises. Merial, VetsBrands and Hill's have also been a fantastic help, with the latter providing our new signage... Transforming Lives!

On a more sombre note, we lost our long-serving council member Eldred Laurenson, who passed away this March. Our condolences to his wife Aileen and family. My gratitude goes out to all the hard-working staff and my executive committee for their tireless work during the year, as well as to our auditors at R&SM and our Chairman from Personal Trust, John le Roux, who oversees our finances.

	2014/15	2015/16	2016/17
<b>Consultations</b>	18 485	18 032	19 086
<b>Vaccinations</b>	11 629	11 315	10 920
<b>Sterilisations</b>	2 209	2 692	3 210
<b>Medical Procedures</b>	6 179	6 668	5 983
<b>Special Operations</b>	365	344	415
<b>Euthanasia</b>	5 465	5 962	6 464
<b>Adoptions - DOGS</b>	187	145	103
<b>Adoptions - CATS</b>	132	72	53
<b>Pound</b>	224	---	---
<b>Inspector Cases</b>	3 186	3 041	3 058



# Honorary Treasurer's Report



**Ann Sanders**

AWS Honorary Treasurer

THE SOCIETY REMAINS IN A REASONABLY STABLE FINANCIAL POSITION AS A RESULT OF OUR CAPITAL FUND BALANCE, WHICH IS DIVERSELY INVESTED. THE 2017 YEAR HAS BEEN A BETTER YEAR WITH REGARD TO BEQUESTS RECEIVED.

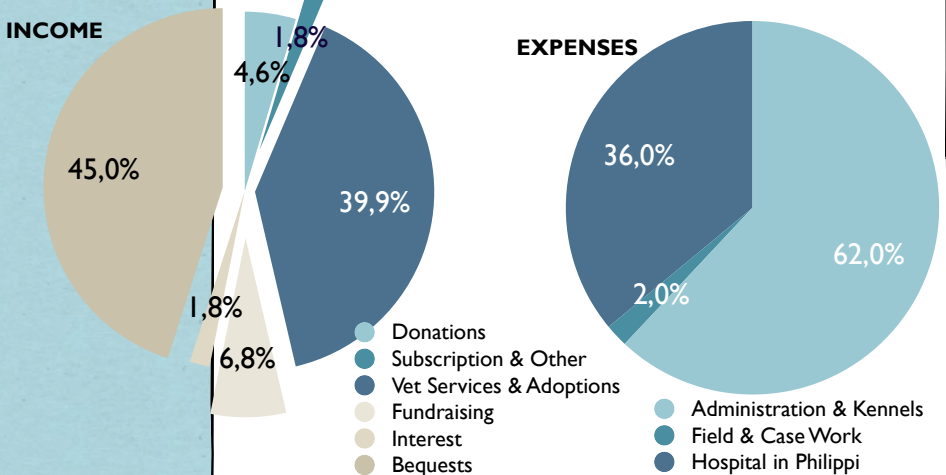
Bequests make up the largest percentage of income, 45% compared to 32% in the last financial year. However, donations have decreased from 29% percent of total income to merely 4.6% in the current year. This fluctuation is a result of the current socio-economic conditions in South Africa.

The income from veterinary services and adoptions has increased to 40% of the total income, thanks to the hard-working staff. The Charity Shop has continued to perform well, remaining at approximately 7% of total income. Investment income has doubled in the current year, because of funds being held for longer periods in short-term interest-bearing accounts.

Overall expenses have increased by about 33%. One reason involved security-related expenses resulting from an incident in which a 30-metre-long delivery truck decimated the Society's front wall, gate and inner security gate. The repairs and additional security necessitated expenses over and above what the insurance was prepared to pay. On the upside, the hospital staff have managed to balance the cost of medical supplies while the remaining expense sectors have remained stable with only nominal increases due to inflation.

Although the Society has remained stable during 2016/17, it still operates with an overall deficit, forcing us to use funds from the capital reserve. We greatly appreciate donations and bequests as the Society is dependent on these funds to continue providing its first-class service.

Annual Financial Statements will be available at the AGM and on request from [carmen@awscape.org.za](mailto:carmen@awscape.org.za).







Please complete and return to Animal Welfare Society of SA  
P.O. Box 32057, Ottery 7808

**I wish to become a**  
..... **member of the**  
**Animal Welfare Society of South Africa**  
**and contribute Rand .....**  
**per annum to the Society.**

**Name .....**

**Email .....**

#### **TERMS OF MEMBERSHIP SUBSCRIPTIONS**

**LIFE MEMBER:** Donation from R500 upwards, with  
voting right

**MEMBER:** Donation from R100  
per annum upwards

**JUNIOR MEMBER:**  
Donation from R50  
per annum upwards.



# BEQUEST FORM

To those who wish to be a benefactor of the Society in your Will, you simply need to record in your Will or Codicil to your Will, the following:

"I give and bequeath to the Animal Welfare Society of South Africa, Papkuilsvlei Road, Philippi 7785, the sum of ....."

**Such bequests are free of estate duty**



**ANIMAL WELFARE  
SOCIETY  
OF SOUTH AFRICA**

## **BANKING DETAILS**

Animal Welfare Society  
Standard Bank - Kromboom  
Account No: 07 286 319 6  
Branch Code: 02 62 09



**NexGard™**  
(afoxolaner) Chewables

Ticks and fleas hate it  
Vets recommend it  
**Dogs are begging for it**

The soft, beef-flavoured NexGard™ chew makes it easy to protect your dog for a full month from ticks and fleas.

Ask your vet for the  
**incredible chew!**



MERIAL HELPLINE: 0860 637425



Merial South Africa Pty Ltd. Reg. No. 2007/0234523/07  
PO Box 1204, Midway House, 1685, Republic of South Africa  
Tel: 011 254 4900 Fax: 011 254 4910

From the makers of  
**FRONTLINE®**  
*Plus*



**NexGard™**  
(afoxolaner) Chewables

Ticks and fleas hate it  
Vets recommend it  
**Dogs are begging for it**

The soft, beef-flavoured NexGard™ chew makes it easy to protect your dog for a full month from ticks and fleas.

Ask your vet for the  
**incredible chew!**



MERIAL HELPLINE: 0860 637425



Merial South Africa Pty Ltd. Reg. No. 2007/0234523/07  
PO Box 1204, Midway House, 1685, Republic of South Africa  
Tel: 011 254 4900 Fax: 011 254 4910

From the makers of  
**FRONTLINE®**  
*Plus*

# DONATIONS FORM

**Your donation is valuable in addressing the Society's needs in one or more priority areas. Please identify where your donation should be directed:**

- ☐ Paying for medicines for pets whose owners can't afford it
- ☐ Purchasing a vehicle for our work in needy communities
- ☐ Developing our building complex, roads and parking
- ☐ Supporting any other area of greatest need

**Please note: Donations are tax deductible.**

**You have the following options:**

- ☐ Making a single donation of R.....
- ☐ Making a regular donation of R.....  
Monthly OR Annually for 1 / 2/ 3 months/years (please circle)  
Beginning on (date).....
- ☐ Discussing donation options with someone from the AWS Executive Committee
- ☐ Choosing to become an anonymous donor

**Payment options:**

- ☐ I enclose my cheque payable to: **Animal Welfare Society of South Africa**
- ☐ I will make a direct deposit or electronic transfer (my name as reference) to:

**STANDARD BANK, Kroombroom Branch**

**Branch Code 02 62 09, Account No: 07 286 319 6**

and email proof to of payment to [admin@awscape.org.za](mailto:admin@awscape.org.za)

- ☐ I will make a credit card payment VISA / MASTER CARD (circle one)

Card holder's name & initials (as printed on card).....

Card expiry date: .....

CVV number (last three digits on back).....

**My Contact details:**

Name:.....

Address:.....

Email:.....

Telephone:.....

Cellphone:.....



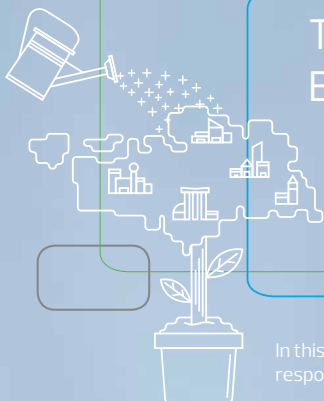
**ANIMAL WELFARE  
SOCIETY of SA**

Please send this completed form to:

Animal Welfare Society, PO Box 32057, Ottery 7808

[admin@awscape.org.za](mailto:admin@awscape.org.za)

Tel: 021 692-2626 Fax: 021 691-1328



# THINKING ABOUT YOUR BUSINESS IS A BIG PART OF OURS

The business world is evolving rapidly. Through advances in technology, communications and infrastructure, business barriers are disappearing and each day we become ever more global.

In this fast-paced environment, you need an adviser that thinks ahead and rapidly responds to your changing needs.

At RSM, we build strong relationships based on a deep understanding of what matters most to our clients. It is our strong, collaborative approach that differentiates us. We will strive to truly understand you, your strategies and your aspirations and endeavour to be considered the adviser of choice to your business.

## OUR MULTI-DISCIPLINARY SERVICE OFFERING INCLUDES:

- Assurance services including statutory audit, reviews and limited assurance reviews
- Local and international tax services
- Corporate legal services
- Outsourced accounting and payroll services
- Risk advisory services
- Management consulting
- Corporate statutory services
- Individual taxation services
- Corporate taxation services
- Estate planning and administration
- HR and labour consulting
- Trust administration
- Valuations
- Business interruption consulting
- B-BBEE consulting
- Corporate finance and transaction support
- Family owned and managed businesses



Cape Town | Durban | Johannesburg | Tshwane

[www.rsmza.co.za](http://www.rsmza.co.za)

**This is the power of being understood. This is the RSM experience.**

RSM South Africa and RSM SA Consulting (Pty) Ltd are independent members of the RSM network in South Africa and trades as RSM. RSM is the trading name used by the members of the RSM network. Each member of the RSM network is an independent accounting and consulting firm, each of which practices in its own right. The RSM network is not itself a separate legal entity of any description in any jurisdiction. The RSM network is administered by RSM International Limited, a company registered in England and Wales (company number 4040598) whose registered office is at 50 Cannon Street, London, EC4N 6JJ. The brand and trademark RSM and other intellectual property rights used by members of the network are owned by RSM International Association, an association governed by article 60 et seq of the Civil Code of Switzerland whose seat is in Zug.

© RSM International Association, 2015





# Donations

**Standard Bank, Kromboom Branch**  
**Account No: 07 286 319 6, Branch Code 02 62 09**

## TRUSTS

.....

A Herbst Trust  
A & G Gray Trust  
AWE Larpent Trust  
B Segal Trust  
B & M Robinson Trust  
Bob Langham-Carter Trust  
BSM Goldstein Trust  
Charles Harding Trust  
Crowther Trust  
Dangwen Trust  
Din Din Trust  
Dora Gassner Trust  
Douglas Jooste Trust  
Dr Sunshine Trust  
EE van der Hoven Trust  
FG Connock Trust  
GM Edwards Trust  
Harry Crossley Foundation

Helga Blake Trust  
JHG Knoren Will Trust  
L Croudace Trust  
Lily Ashton Trust  
M Flarry Trust  
Maskew Miller Trust  
Maxwell Trust  
MD Woodgate Trust  
Meaker Will Trust  
Meyer Trust  
Nussbaum Foundation  
Patricia Greutink Trust  
Pilcher Trust  
R & E Harvey Trust  
Ralf Herriman Trust  
Stern Trust  
Strong Trust  
VWG Stone Trust  
Yates Trust

## BEQUESTS

.....

E/L JA Allen  
E/L MB Dixon  
E/L Ruth Dose  
E/L J Emerson  
E/L LP Faber  
E/L Henshilwood  
E/L Judith Hunt  
E/L R Lewin  
E/L AWS Marsden  
E/L AC Peacock  
E/L DP Randall  
E/L Romijn  
E/L DMK Rowland  
E/L G Schlafke  
E/L ML Skewes  
E/L Snodgrass  
E/L L Vinson



# Free\* mini dream maker pillow!



**TO EXPLORE THEIR WILDEST DREAMS!**

Buy 2 bags Science Plan or Ideal Balance Canine Mini sized between 1.8kg and 3kg

OR

Buy 2 bags Prescription Diet Canine Small sized between 1.5kg and 4kg

\*Offer valid while stocks last. Terms and conditions apply.  
Visit [www.hillspet.co.za/news](http://www.hillspet.co.za/news) or call us toll-free on 0800 228 783 for more details.





Only 1 in 20 South Africans  
can afford to retire.  
Let's improve your odds.



Over the course of the last 30 years, we've gathered together some of the best minds in the business. A good retirement plan, followed through consistently over time has dramatically improved the quality of retired life for many of our clients.

We offer a comprehensive range of financial services, including investment and portfolio management, offshore financial services, trustee services, retirement planning, local and offshore money market, estate planning, tax services and wills.

You're welcome to phone **Greg Nasson** at our Rondebosch office on 021 689 8975. Let's talk - **personally**.

PERSONAL TRUST INTERNATIONAL (PTY) LTD  
Personal Trust House Belmont Park Belmont Road Rondebosch 7700  
P O Box 476 Rondebosch Cape Town 7701 RSA  
Tel: 021 689 8975 · Fax: 021 686 9093  
**[www.personaltrust.co.za](http://www.personaltrust.co.za)**



*for the personal touch*

# OUR STAFF

## EXECUTIVE COMMITTEE

**President - Dr J McNamara**

**Chairman - Mr J le Roux**

**Vice Chairman - Dr J McMullen**

**Honorary Treasurer - Ms A Sanders**

**Prof M Jacobs**

**Ms M Pontier**

**Ms S Severn**

## PATRON

Executive Mayor of Cape Town  
Alderman Patricia de Lille

## COUNCIL

PRESIDENT: DR J MCNAMARA

PROF M JACOBS

MR J LE ROUX

MRS C MCMULLEN

DR J MCMULLEN

MRS M MCNAMARA

MRS J PIENAAR

MR F PIENAAR

MS M PONTIER

MS A SANDERS

MS S SEVERN



Kids bringing in a cat for treatment.

## HOSPITAL

### Nursing Staff

Ms M Hirsekorn

Mr C Samuels

Mr J le Roux

### Nursing Assistants

Mrs F Barnard

Mr J Ngcakaza

Mr M Mdudu

Mr O Mdudu

### Hospital Staff

Ms E Sifuba

## Inspectors

Mr M Levendal - Senior Inspector

Ms A Stanbridge - Inspector

Mrs T Esterhuyse - Case Officer

## Reception

Mrs C Fester

## KENNELS

Mrs C Leonard - Manager

### Kennel Assistants

Mr L Nkotha

Mr N Ngcakaza - Cattery Assistant

Mr A Ngcakaza - Kennel Assistant

Ms L Tyatya - Cleaning Staff

## Maintenance

Mr A Jaftha

Mr E Ngcakaza - Maintenance Assistant

## Charity Shop Staff

Mrs S Rogers

Mrs L Levendal

## Administration

Mrs C Hoy



# Contact

## FUNDRAISING ACCOUNT

Nedbank Current Account  
Branch Code: 19 87 65  
Account No: 114 822 258 8

## BANKING DETAILS

Standard Bank: Kromboom  
Account No: 07 286 319 6  
Branch Code: 02 62 09



**Our Staff**  
.....

MEMBER OF THE WORLD  
FEDERATION OF THE  
PROTECTION OF ANIMALS  
NPO 003-037  
P.B.O. 18/11/13/1884



**ANIMAL WELFARE  
SOCIETY**  
OF SOUTH AFRICA

## Office, Clinic & Kennels

Papkuilsvlei Road, Philippi  
P.O. Box 32057, Ottery 7808  
Tel. 021-692 2626  
Fax. 021-691 1328

Email: [admin@awscape.org.za](mailto:admin@awscape.org.za)

Web: [www.awscape.org.za](http://www.awscape.org.za)

Facebook:

Animal-Welfare-Society-Philippi

## Clinic Hours

Weekdays

8:00 - 12:00 &  
14:00 - 15:30

Weekends & Public

Holidays

8:00 - 12:00